



# **NorDrill**

Innovation & Power combined

**Advanced Top Drive drilling systems**

**NorDrill have been delivering state of the art Top Drive systems for the last 21 years, to the oil and gas industry.**

Our design philosophy is to reduce downtime by being cost efficient throughout the lifeline of our products. NorDrill`s Top Drive systems are equipped with advanced technology to ensure safety and efficiency on drill floor.

The company`s design meets any drilling applications whether offshore, dessert or arctic environments.

NorDrill specialize in tailor made solutions in every size and configuration to meet our client`s needs. All our Top Drives are designed to meet the API 8-C standards.

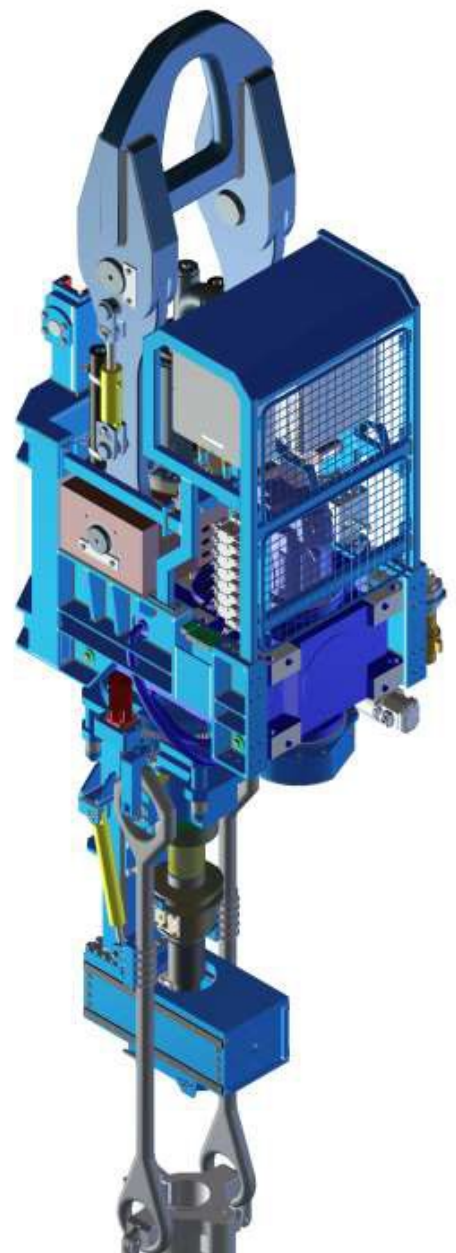
Throughout our expertise, products and operational support, NorDrill makes sure our clients are sustainable both now, and in the future.

# Top Drive

The NorDrill Top Drives is designed with a compact design to easy fit into existing rigs.

## Main Features

<b>Modular Design</b>	Enables larger overhauls and repairs on-site
<b>Bearings</b>	High capacity bearings
<b>Communication</b>	Single BUS cable for communication between the Power Pack and the Top Drive
<b>Delivery</b>	Can be delivered as standalone system, or integrated in existing rig structure
<b>Interface</b>	Intelligent, safe and intuitive interface
<b>Support</b>	Remote Access System enables NorDrill's engineers to support customers all over the world without the need of on-site assistance
<b>Lubrication system</b>	Self-maintained gear lubrication system
<b>Pipehandler</b>	Fully remote operated Pipehandler with 360dg free rotation, position lock, IBOP operation, bi-directional link tilt and backup tong. Also controls hydraulic or pneumatic elevator when installed.
<b>Lubrication system</b>	Self-maintained gear lubrication system
<b>Gear</b>	Custom made gear ratio for optimal speed and torque
<b>IBOP</b>	Single IBOP (mud saver valve) remotely operated from drillers panel
<b>Link tilt system</b>	Remote operated link tilt system, total 70 degrees
<b>Thread saver</b>	The wide inner Hydraulic weight compensation to make stabbing in/spinning out soft, and free from risk of damage to threads on make-up or break-out Also function as damping like conventional spring-hook
<b>Loops</b>	Quick connectors for all loops



## Technical information – Hydraulic driven Top Drives

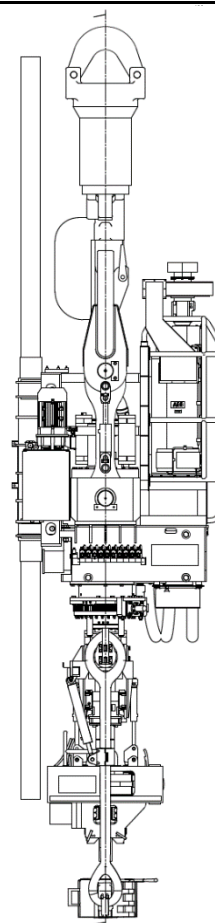
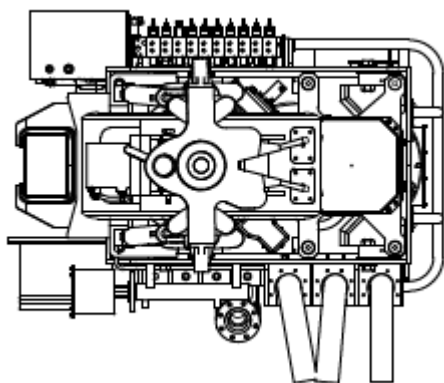
NorDrills Hydraulic Top Drive Systems are delivered alone or as complete standalone systems, consisting of all necessary hardware to run the top drive on your rig.

	Ratio	Gear 1 nominal drill torque	Gear 2 drill torque at max RPM
<b>250 Tons</b>	9,9	18 000 ft.lb @ 115 rpm	8 500 ft.lb @ 210 rpm
	11,6	21 000 ft.lb @ 100 rpm	8 500 ft.lb @ 200 rpm
	12,7	22 500 ft.lb @ 90 rpm	9 000 ft.lb @ 190 rpm
	14,4	26 000 ft.lb @ 80 rpm	10 250 ft.lb @ 165 rpm

**Estimated dimensions 250 Tons (l x w x h) mm: 1725 x 1100 x 4800**

	Ratio	Gear 1 nominal drill torque	Gear 2 drill torque at max RPM
<b>500 Tons</b>	11,4	38 500 ft.lb @ 150 rpm	25 500 ft.lb @ 230 rpm
	12,4	42 250 ft.lb @ 140 rpm	28 000 ft.lb @ 210 rpm
	14,2	48 500 ft.lb @ 125 rpm	32 000 ft.lb @ 180 rpm
	15,5	53 000 ft.lb @ 110 rpm	35 000 ft.lb @ 165 rpm

**Estimated dimensions 500 Tons (l x w x h) mm: 2175 x 1355 x 5275**



## Technical information – Electrical driven Top Drives

NorDrills Electrical Top Drive Systems are delivered alone or as complete standalone systems, consisting of all necessary hardware to run the top drive on your rig.

	Ratio	Gear 1 drill torque at max RPM	Gear 2 drill torque at max RPM
<b>150 Tons</b>	11,6	15 000 ft.lb @ 120 rpm	9 250 ft.lb @ 180 rpm
	12,7	16 500 ft.lb @ 110 rpm	9 250 ft.lb @ 180 rpm
	14,4	18 500 ft.lb @ 95 rpm	10 000 ft.lb @ 165 rpm

**Estimated dimensions 150 tons (l x w x h) mm: 1520 x 900 x 4600**

	Ratio	Gear 1 drill torque at max RPM	Gear 2 drill torque at max RPM
<b>250 Tons</b>	9,9	18 500 ft.lb @ 120 rpm	10 500 ft.lb @ 200 rpm
	11,6	21 000 ft.lb @ 105 rpm	10 500 ft.lb @ 200 rpm
	12,7	23 000 ft.lb @ 95 rpm	12 000 ft.lb @ 180 rpm
	14,4	26 000 ft.lb @ 85 rpm	12 000 ft.lb @ 180 rpm

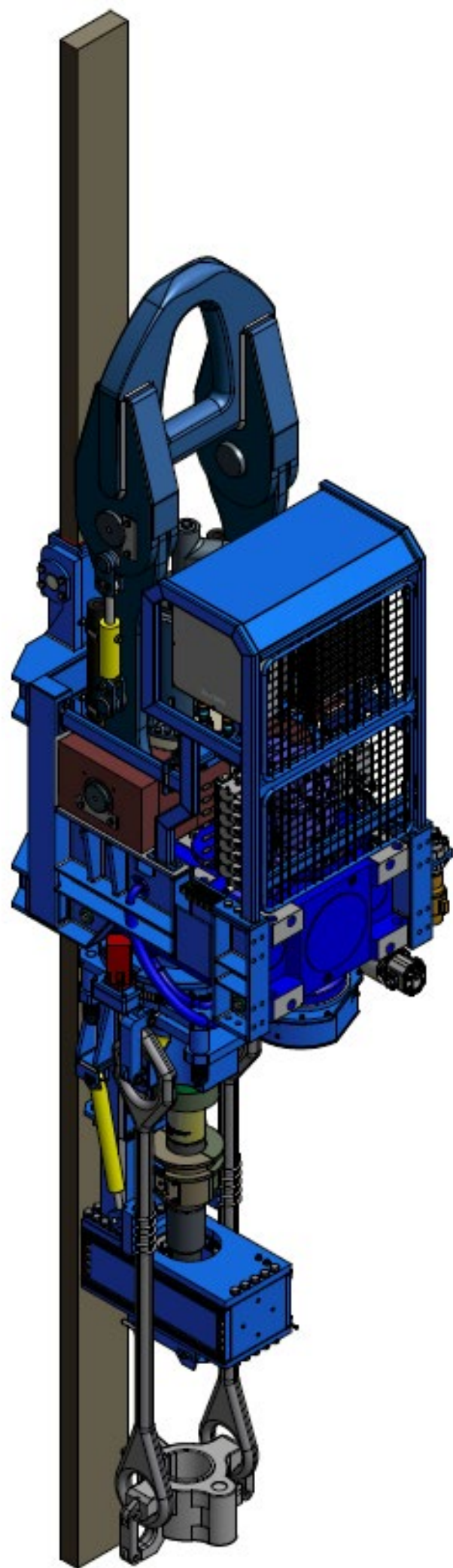
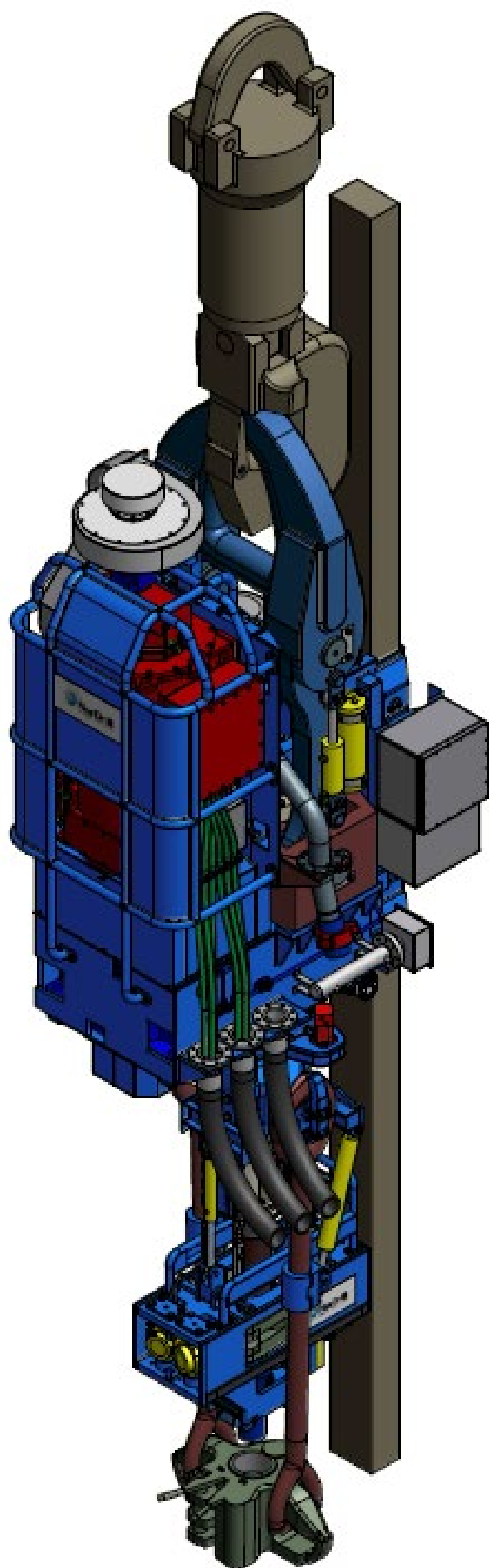
**Estimated dimensions 250 Tons (l x w x h) mm: 1725 x 1100 x 4800**

	Ratio	Gear 1 drill torque at max RPM	Gear 2 drill torque at max RPM
<b>350 Tons</b>	9,9	25 750 ft.lb @ 120 rpm	13 750 ft.lb @ 210 rpm
	11,6	30 000 ft.lb @ 105 rpm	14 500 ft.lb @ 200 rpm
	12,7	32 750 ft.lb @ 95 rpm	14 500 ft.lb @ 200 rpm

**Estimated dimensions 350 Tons (l x w x h) mm: 1840 x 1150 x 5015**

	Ratio	Gear 1 drill torque at max RPM	Gear 2 drill torque at max RPM
<b>500 Tons</b>	10,11	36 750 ft.lb @ 180 rpm	27 00 ft.lb @ 225 rpm
	11,4	41 500 ft.lb @ 160 rpm	28 750 ft.lb @ 210 rpm
	12,4	45 000 ft.lb @ 145 rpm	30 000 ft.lb @ 200 rpm
	14,2	52 000 ft.lb @ 125 rpm	34 500 ft.lb @ 175 rpm

**Estimated dimensions 500 Tons (l x w x h) mm: 2175 x 1355 x 5275**



### **Sales Information**

post@nordrill.no

+47 46 70 8800

### **Headquarters**

Vige Havnevei 33  
4633 Kristiansand  
Norway

[www.nordrill.com](http://www.nordrill.com)

# **NorDrill**

**Innovation & Power combined**